

CAPA / LON-CAPA at Simon Fraser University

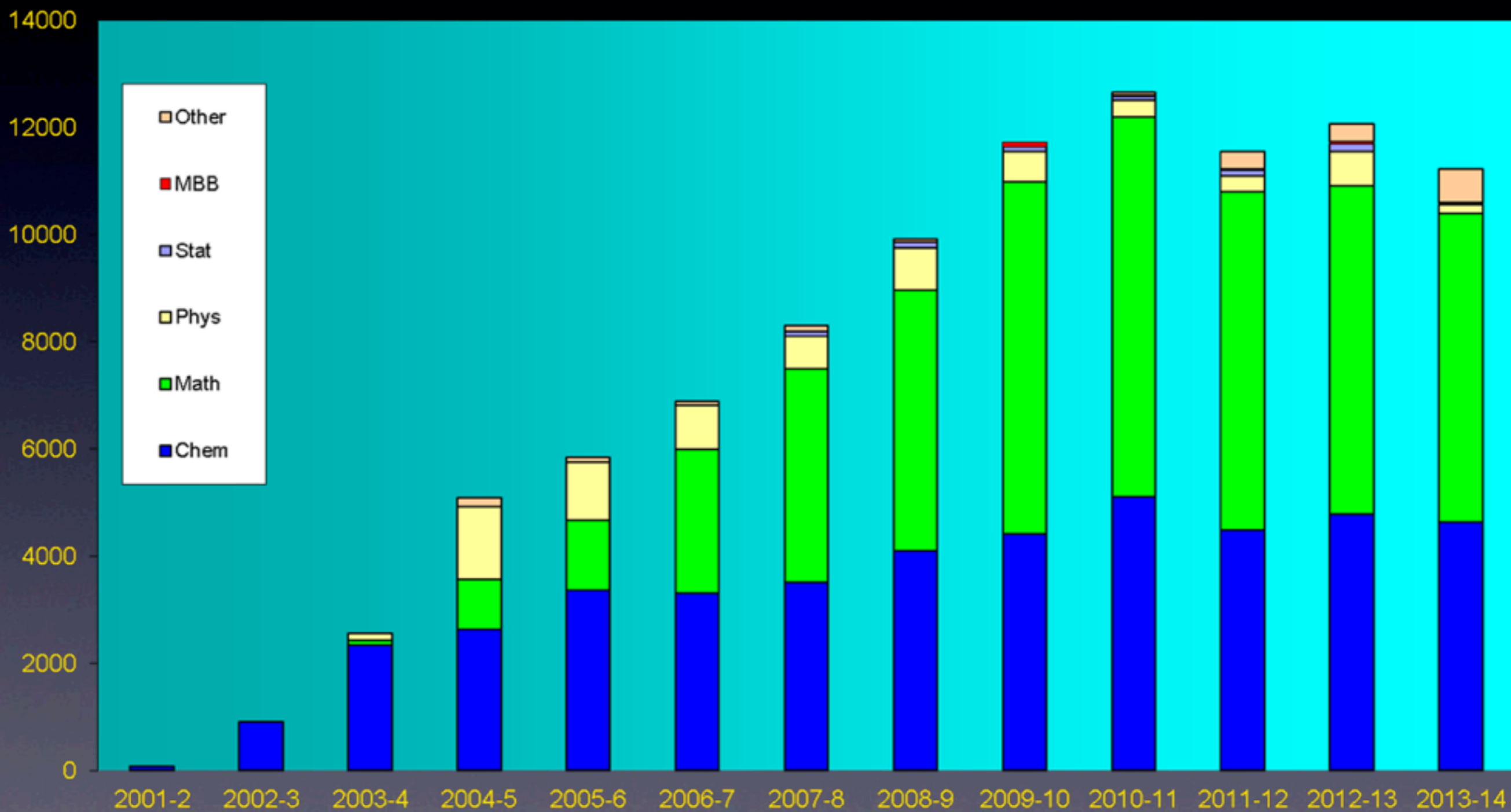
<http://www.sfu.ca/loncapa/>

- 1995 - 2001 **CAPA** (Phys & Chem Depts)
- 2001 transition to **LON-CAPA**
- SFU IT Services maintains Fac. Sci. servers
- 2004 Math introduces **LON-CAPA** and by 2008 has become the major user Dept.
- 2008 SFU joins **LON-CAPA** Academic Consortium, as Associate member, and hosts Annual Conference.
- Currently: dedicated blade Library Server; RHEL5; **LON-CAPA** 2.10.1; 200/300GB data.
 - 3 Access servers are VMs.
- Planned upgrade to **LON-CAPA** 2.11 and RHEL6
 - Library server will move to a VM, with readily expandable remote file space.



LON-CAPA Annual Course Enrolments

SFU



Large Class Management Issues:



e.g. **CHEM121 Fall 2013**

- 850 students (many enrolment changes during Weeks 1 - 3)
- 2 Campuses -- 3 Lecture sections -- 31 Tutorial sections
- 14 Lab sections -- 12 “LabDays”
- 2 Lab Rooms (rooms sometimes shared with other concurrent courses)
- 4 Instructors -- 4 Lab Technicians -- 22 TAs
- Weekly homework -- Pre-labs, -- During- and Post-lab Reports
- Several Exam Rooms -- Assigned seating -- Multiple Exam Versions
- Need to conscientiously coordinate marking and provide timely feedback to individual students.

1. Many **changes in enrolment** requires daily roster updates with management of individual’s course section, lab group, dates of assignments etc
2. **No 1:1 correlation between Lab sections and LabDays**
3. **Alternating or rotating lab schedules for different groups in some courses.**
4. Exams, **appropriately spaced assigned seating** and **exam version control** are needed.
5. Input from diverse Instructors and TAs needs to be coordinated and **secure**.



Automated Assessments for high-enrolment courses

- SFU Chemistry Courses *regularly* using LON-CAPA
 - Chem110 Introductory Chemistry Lecture
 - Chem111 Introductory Chemistry and Laboratory
 - Chem120 General Chemistry I
 - Chem121 General Chemistry and Laboratory I
 - Chem122 General Chemistry II
 - Chem126 General Chemistry Laboratory II
 - Chem215 Introduction to Analytical Chemistry Lecture & Laboratory
 - Chem281 Organic Chemistry I Laboratory

● Chem109 & Chem192 & SCI300 more recently. CHEM232, CHEM316, CHEM360 occasionally, Chem286 previously...

● MBB362, Phys101 and Phys102 also regularly use LON-CAPA (instructor dependent)

● Anticipate more use in other Organic Chem courses in future, especially Labs.

● Most lower level Math courses..... cf J. Gray, V. Jungic et. al.



Overview by Tasks in Chemistry

I. Lecture homework

A. Regular assignments

- in Intro, General, Analytical
- sometimes Physical, Organic

B. Quizzes/Tests/Surveys

II. Laboratories

A. Pre-lab homework assignments

B. Managing 'Unknowns'

C. Reports

D. 'Dry-labs'

III. Exams (paper)

A. Bubble sheet / Machine-graded

1. Multiple Choice

2. Numerical

B. Written / Marker-graded

IV. Application Forms

- Submission, review & ranking

Homework, Prelabs, Lab Reports (during- and post-Lab) and Exams are in constant use. Note that this involved many different instructors.

We use trimester system with different people teaching courses each trimester -- each with their own preferences and methods.

Exams

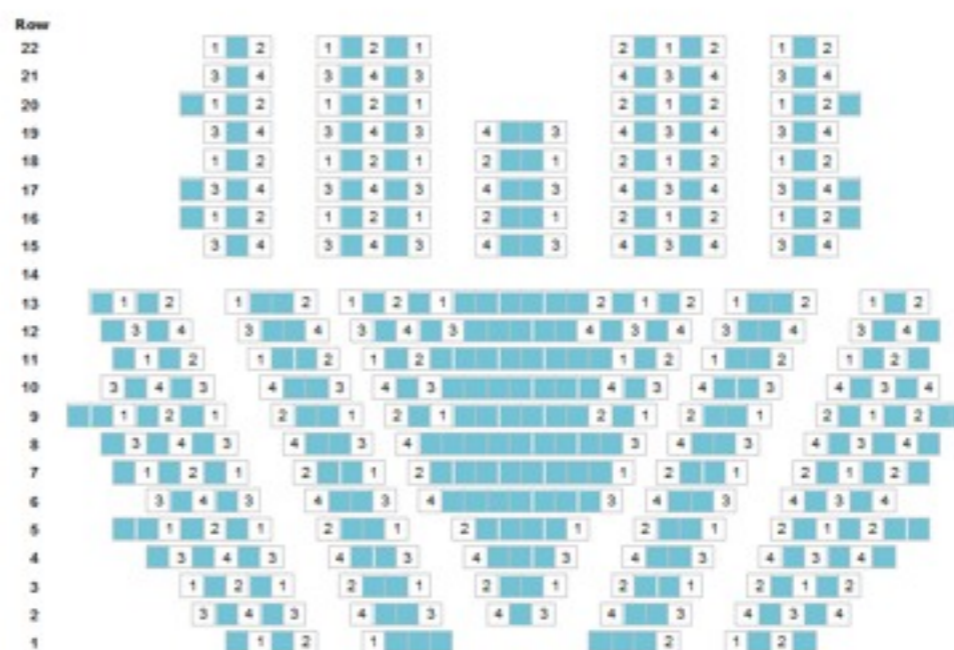
LON-CAPA

- All 1st-year Chem Exams in LON-CAPA
 - Multiple Choice
 - Numerical
 - Written
- Pre-assigned specific versions.
- Cumulative stats aid in selection of questions.
- Grading comments displayed in LON-CAPA (“Score Upload”)

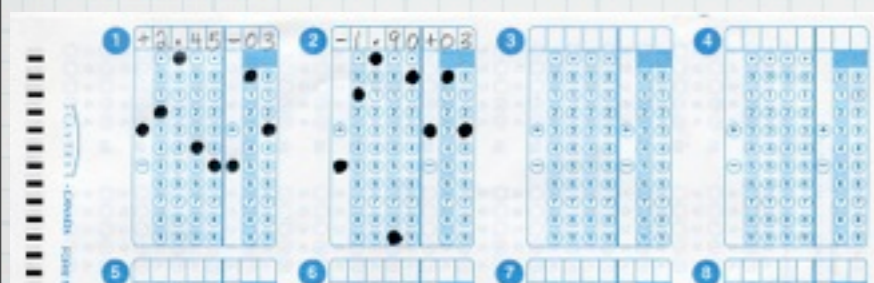
Final
Exam Room: C9001
Exam Date: 09-Dec-2011
Exam Time: 12:00 PM

Department of Chemistry
Exam Seating Chart
CHEM122_20113_BRNBY

Version	CODE	Quantity
1	4971	63
2	6300	63
3	7170	61
4	9837	61
Total		248



SIMON FRASER UNIVERSITY
Department of Chemistry
Marks Course Grading Program
Version V02.01.18
15-Dec-2013
Copyright©1995-2014 R. Korteling
All rights reserved.



- 1) Jan 2005 South Carolina – Scantron Exams -- Guy Albertelli
- 2) Summer Semester 2005 implemented for Chem110/111–Gerrit Keizer
- 3) Subsequently, 1-, 2- or 3-part exams, all generated and printed from LON-CAPA.
- 4) Why? Numerous reasons -- not necessarily individually compelling, but collectively so.
 - a) It becomes relatively effortless to generate new versions of exams, as needed.
 - b) Complete control over dynamically generated content.
 - c) Provides a permanent and cumulative association of assessment resources with statistics reflecting their effectiveness.
 - d) By creating and grading exams in LON-CAPA, we are now able to easily maintain a semi-quantitative evaluation of every Exam question, which can be readily reviewed when selecting questions for a new exam.

Individual's Chem122_Spring_2014 Midterm Results as displayed in *LON-CAPA*

Midterm Results

Total: Mks/Pts = 21.75/24

Multiple Choice: Mks/Pts = 16/18

Numerical: Mks/Pts = 3/3

Written: Mks/Pts = 2.75/3.00

Exam Version: 2222

Your Choices: bdbbdaaead eeaccbec

Exam Answers: bdbbdaaead eeaccebc

Point Values: 1111111111 11111111

Q1: Student Ans = $1.14\text{E}+15$ Exam Ans = $1.14\text{E}+15 \pm 5.68\text{E}+13$ Pts = 1 Score = 1

Q2: Student Ans = $9.28\text{E}-06$ Exam Ans = $9.29\text{E}-06 \pm 4.64\text{E}-07$ Pts = 1 Score = 1

Q3: Student Ans = 0.00499 Exam Ans = $0.00499 \pm 9.98\text{E}-05$ Pts = 1 Score = 1

Class Average: 15.07/24

